

# OTDR Test Report

File : otdr-7.sor

File Date : 2022-5-23 16:36:55

Cable :

Start Postion : start postion

Launch Fiber : 0.0000 km

Fiber : 7

End Postion : end postion

Receive Fiber : 0.0000 km

Operator : handler name

Fiber Type : Singlemode

Device Name :

Wave : 1310 nm

Range : 2.0 km

Pulse : 80 ns

Test Mode : Average-Test

Average Times : 15

Ior : 1.46770

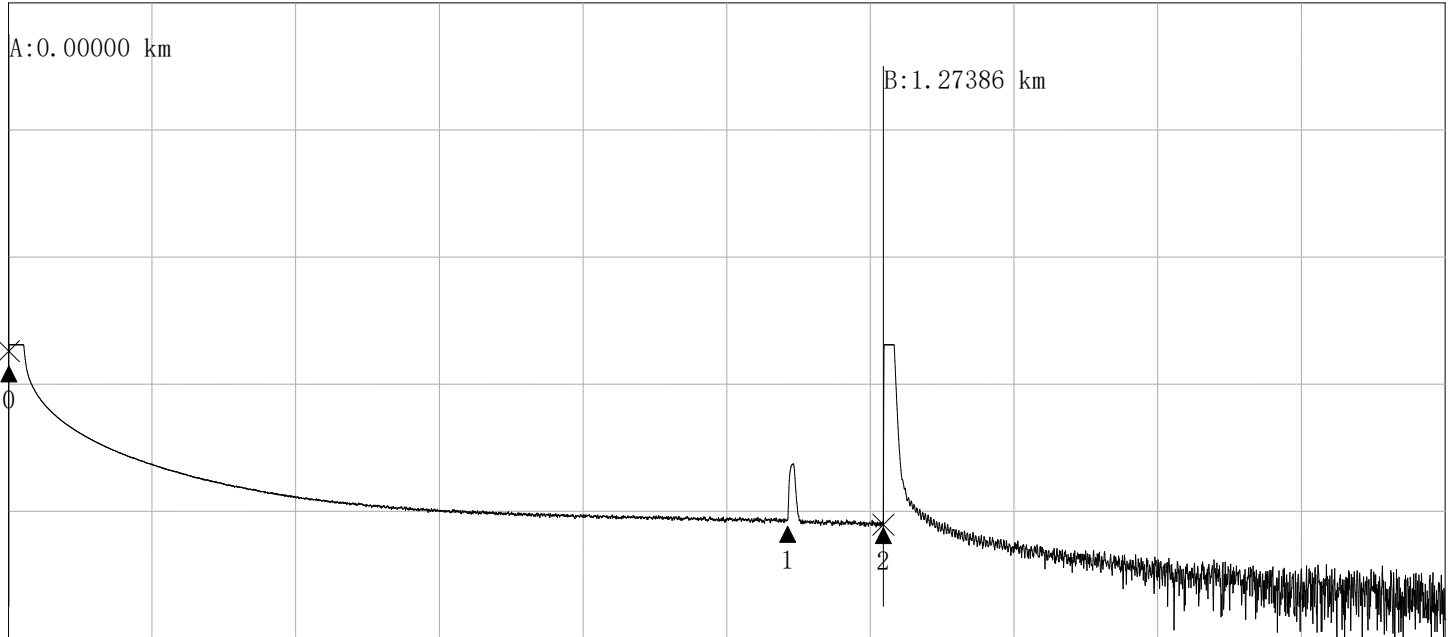
End Threshold : 10.00

Non-Reflection Threshold : 0.20

Reflection Threshold : 40.00

Test Trace

X:200m/Div, Y:10.0dB/Div



A-B Segment Information

Distance (A-B) :	1.27386 km
Loss (A-B) :	1.594 dB
A-B Average Loss:	1.251 dB/km
LSA Average Loss:	1.337 dB/km
A-B Return Loss:	0.000 dB

A/B Points Information

A Postion:	0.00000 km
B Postion:	1.27386 km
A Power:	10.590 dBm
B Power:	8.996 dBm
----	----

Fiber Link Information

Number: 2      Link Length: 1.2738 km      Total Loss: 1.704 dB      Average Loss: 1.337 dB/km

Event Table

No	Type	Dis (km)	Aver. -L (dB/km)	Event-L (dB)	Return-L (dB)	Link-L (dB)
0	Start	0.0000	0.000	0.000	----	0.000
1	Reflect	1.1344	1.350	0.122	-53.962	1.653
2	End	1.2738	0.359	----	-34.476	1.704